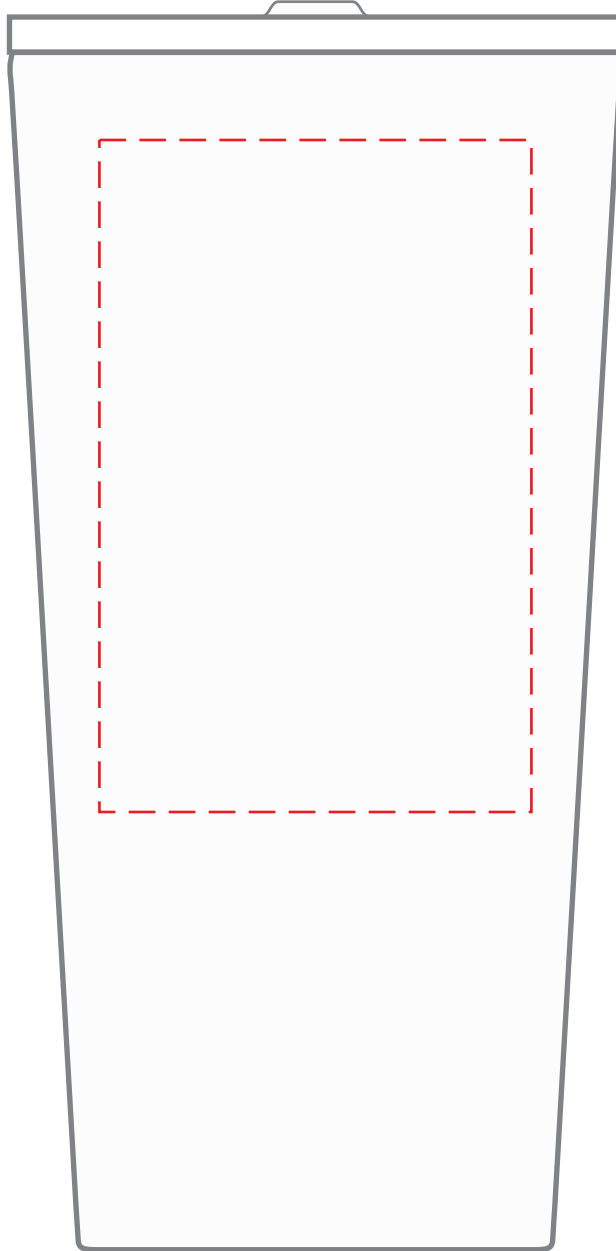


**DGSG-BFC**  
**20 oz. Straight Tumbler**  
**DIRECT IMPRINT**



Item shown for  
placement and fill.



Actual Size (100%)

**IMPRINT AREA:**  
**2.25"W X 3.5"H**

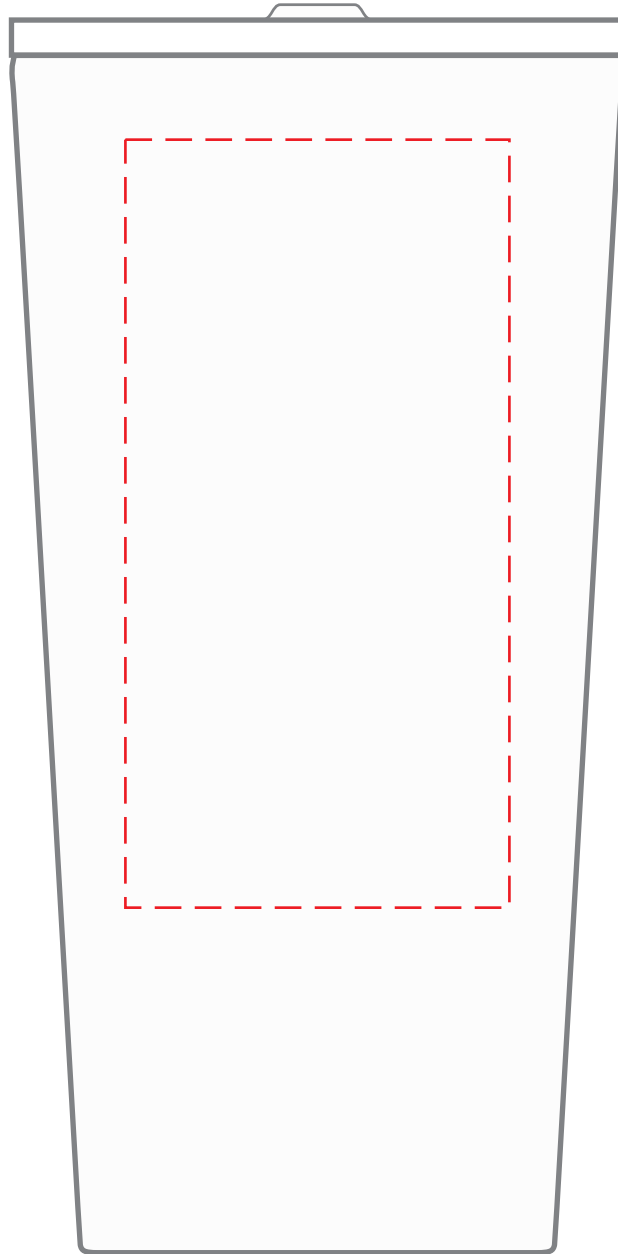


- Red Layout Lines Do NOT Print.

# DGSG-BFC

## 20 oz. Straight Tumbler

### LASER



Item shown for  
placement and fill.



Actual Size (100%)

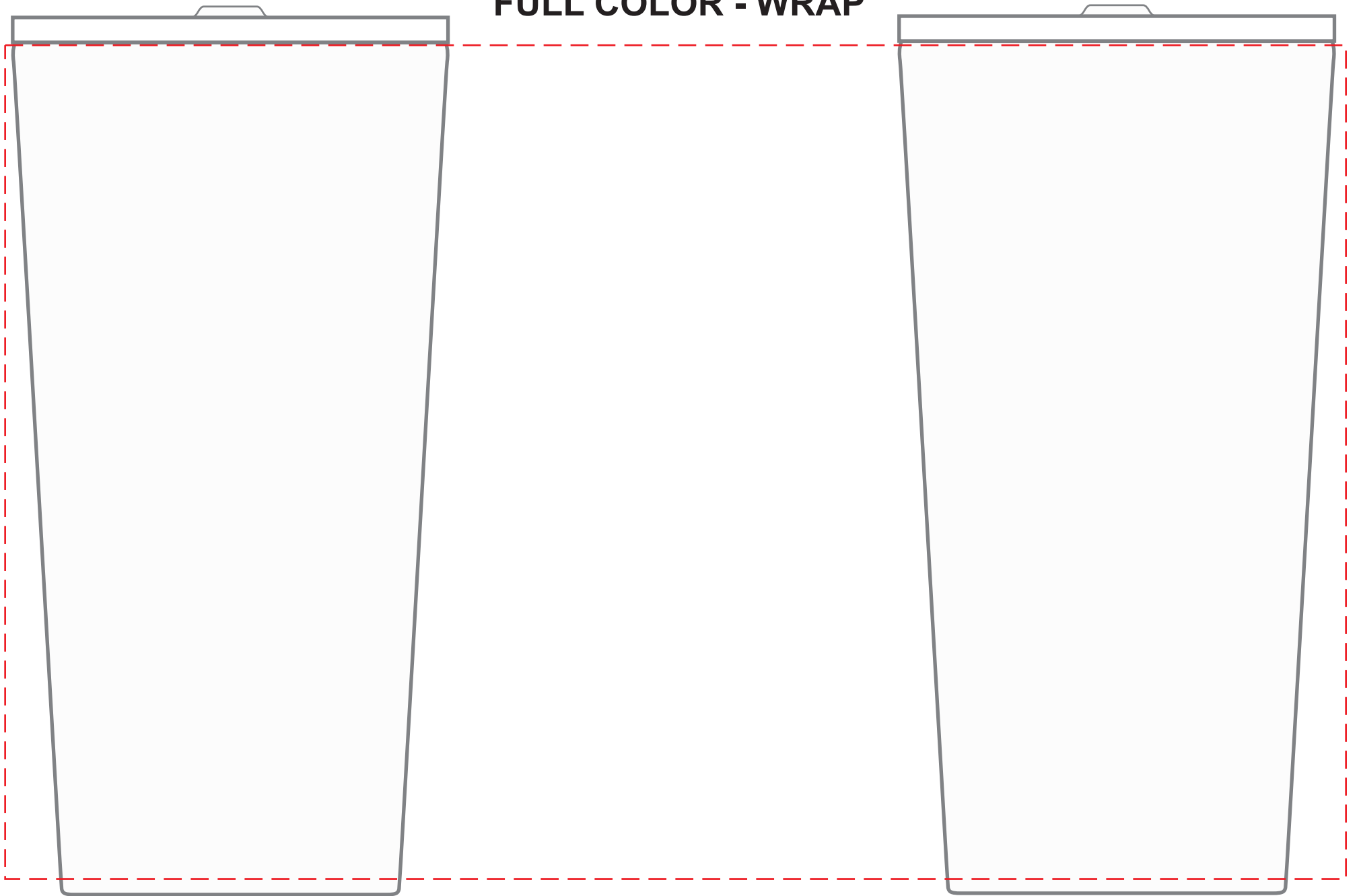
## IMPRINT AREA:

### 2"W X 4"H



- Red Layout Lines Do NOT Print.

**DGSG-BFC**  
**20 oz. Straight Tumbler**  
**FULL COLOR - WRAP**



Actual Size (100%)

**IMPRINT AREA: 10.375"W X 6.45"H**



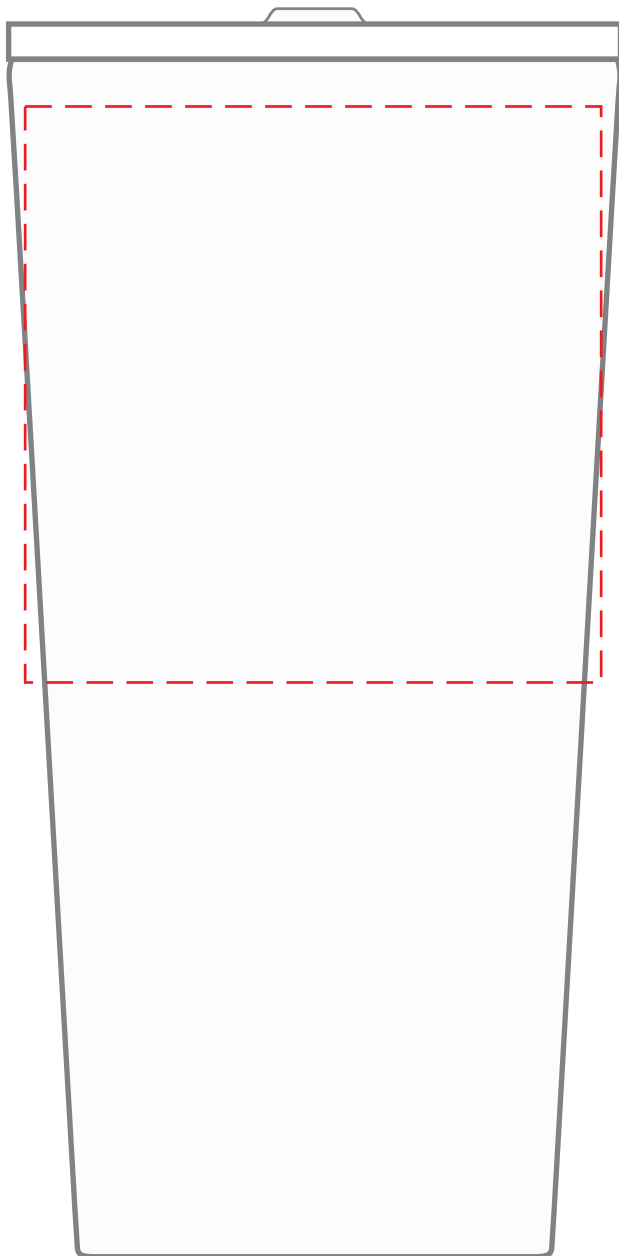
- Red Layout Lines Do NOT Print.

asi/71685 • ppai 113793 • sage 56349

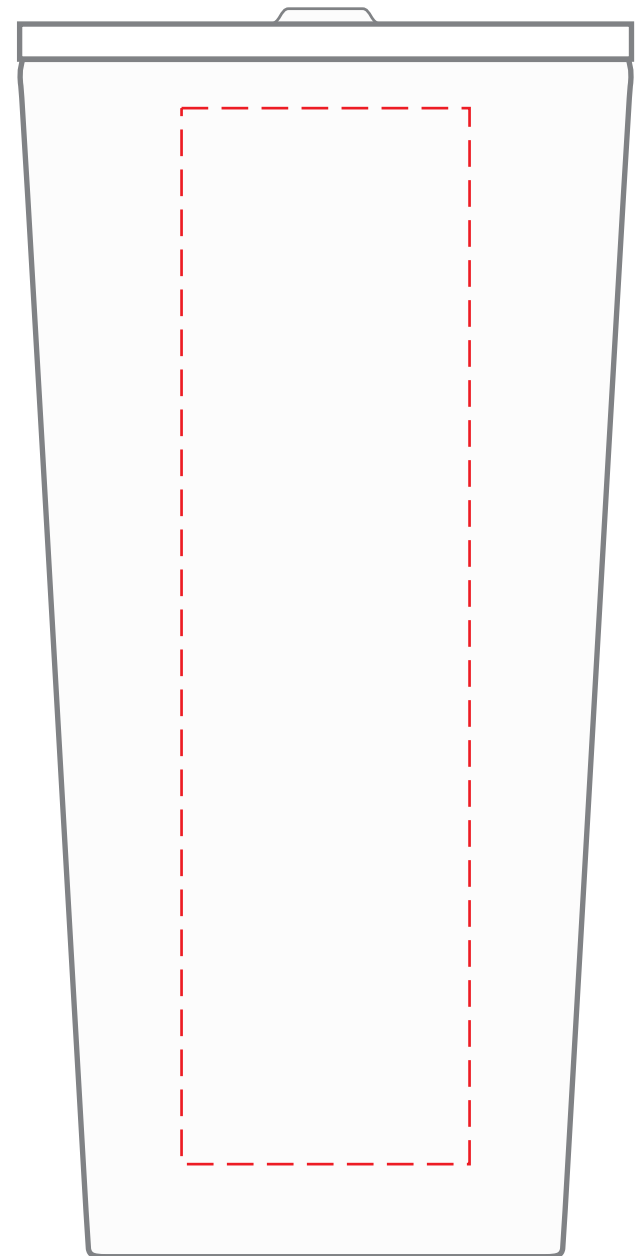
Item shown for  
placement and fill.



**DGSG-BFC**  
**20 oz. Straight Tumbler**  
**FULL COLOR-SIDE**



**HORIZONTAL  
IMPRINT AREA:  
3"W X 3"H**



**VERTICAL  
IMPRINT AREA:  
1.5"W X 5.5"H**

Item shown for  
placement and fill.



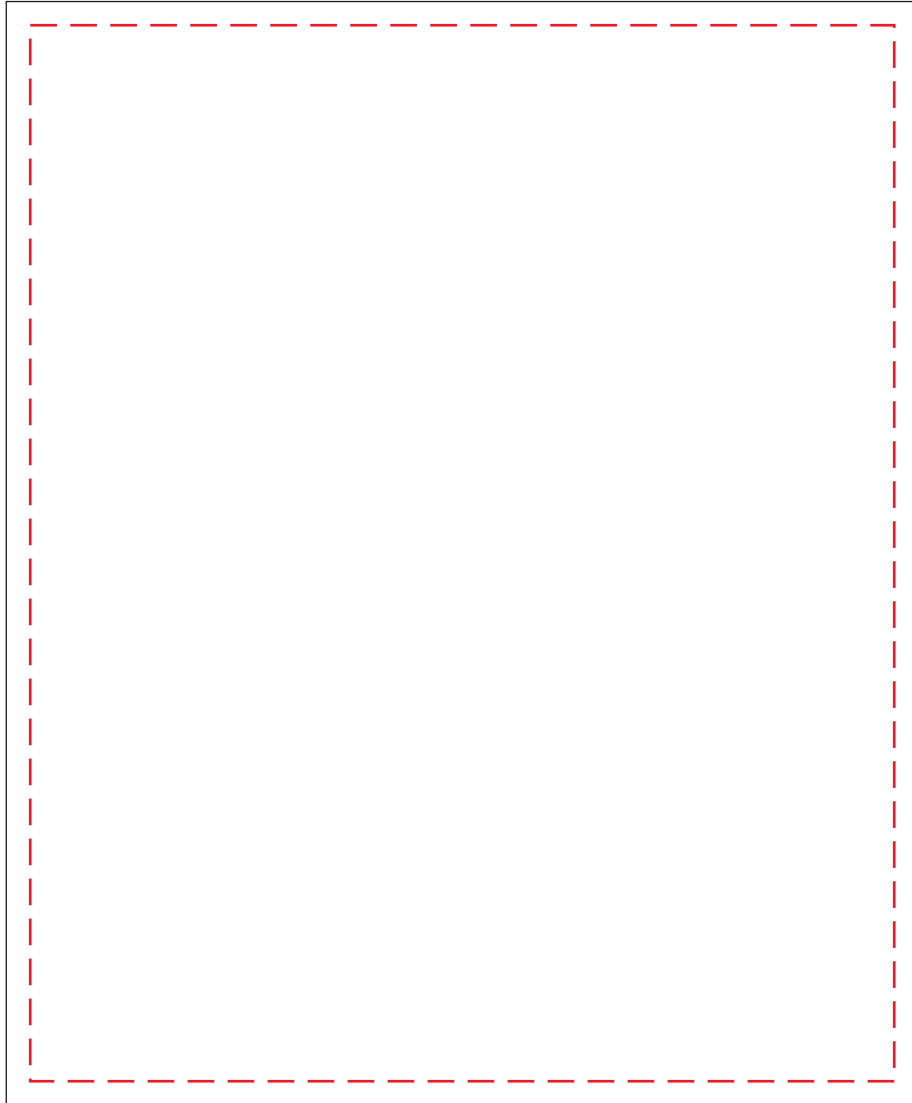
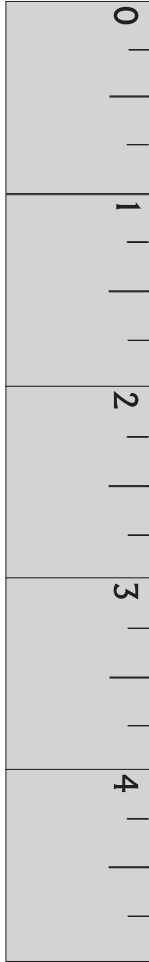
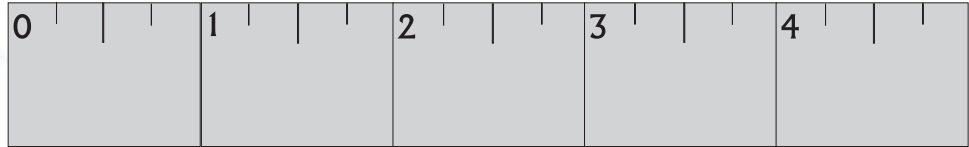
Actual Size (100%)



- Red Layout Lines Do NOT Print.

Item shown for placement and fill.

# DGSG-BFC COFFEE LABEL



Actual Size (100%)

**LABEL AREA: 4.5"W X 5.5"H**

 - Red Layout Lines Do NOT Print.



Item shown for placement and fill.

# DGSG-BFC BUT FIRST, COFFEE GIFT SET SLEEVE



A large rectangular area defined by red lines, divided into five horizontal sections, intended for the design of the gift set sleeve.

Actual Size (100%)



- Red Layout Lines Do NOT Print.